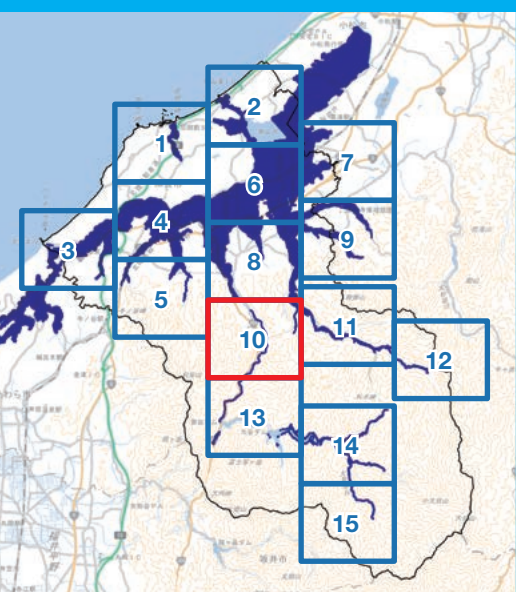


# Flood Hazard Map

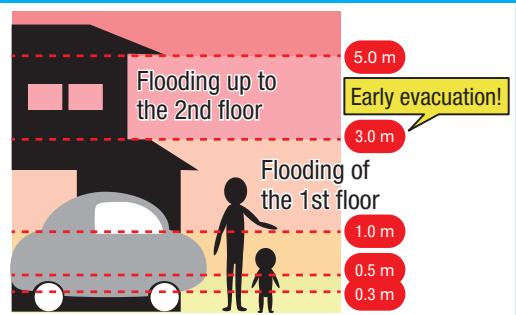
## 10 Yamanaka-onsen



- ### Legend
- Designated shelters
  - Evacuation direction
  - Facilities for people in need of consideration in estimated flooding areas\*
  - Facilities for people in need of consideration in sediment disaster alert areas\*  
\*Check the facility names on P6.
  - Recording stations
  - Water level gauges
  - River monitoring cameras
  - Disaster prevention administrative radio (outdoor loudspeakers)
  - City hall
  - Police station / Police box / Police substation
  - Hospital
  - Fire station / Fire substation

- ### Dangerous places on the way to the shelter.
- Bridge
  - Underpass
  - River / Water course / Reservoir
  - Places prone to be flooded
  - Sediment disaster alert areas
  - Sediment disaster special alert areas

### Water depth classified by color and flooded image



### Areas where early evacuation is required

### Estimated building collapse area due to flooding

- River overflow
- Riverbank erosion
- If the water flows fast, it may cause wooden buildings to collapse.
- If the water erodes the ground, buildings may fall down.

It is necessary to evacuate before flooding in the areas where bank erosion, river overflow, or the 2nd floor flooding is estimated.

